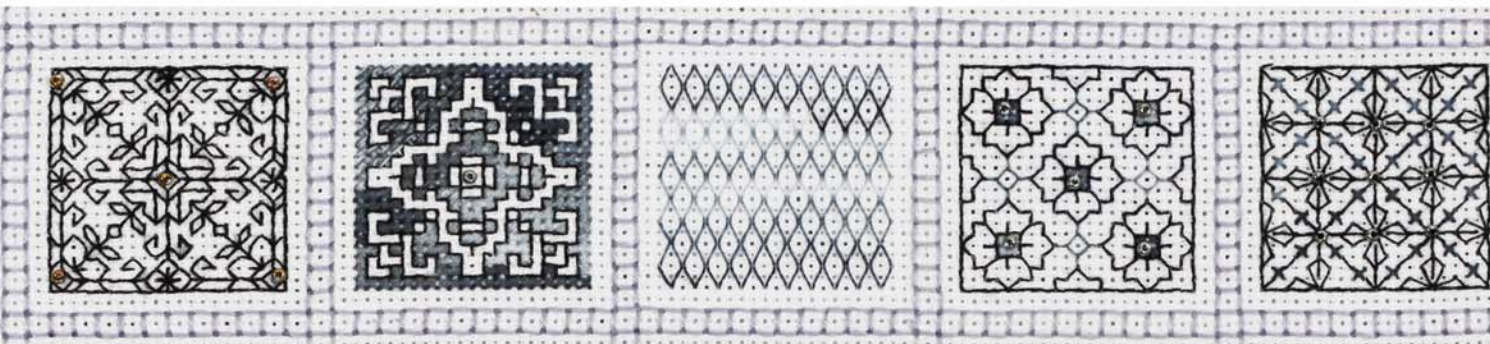
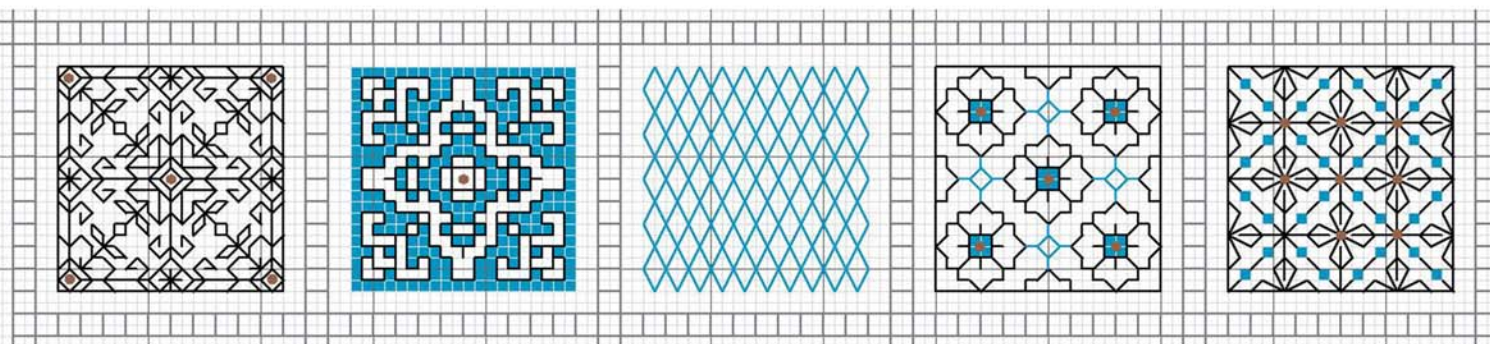
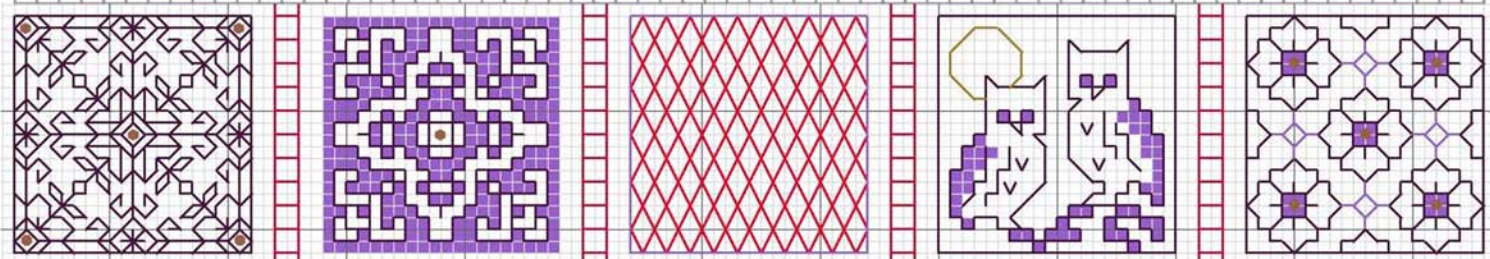
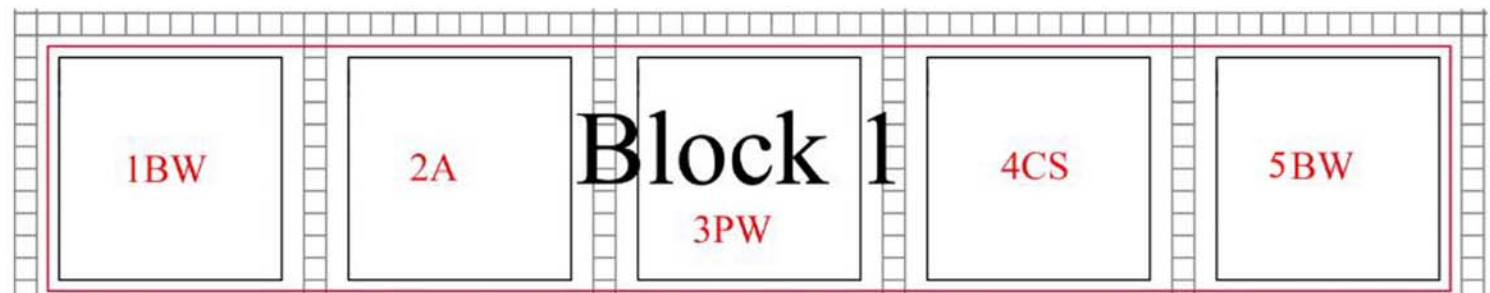


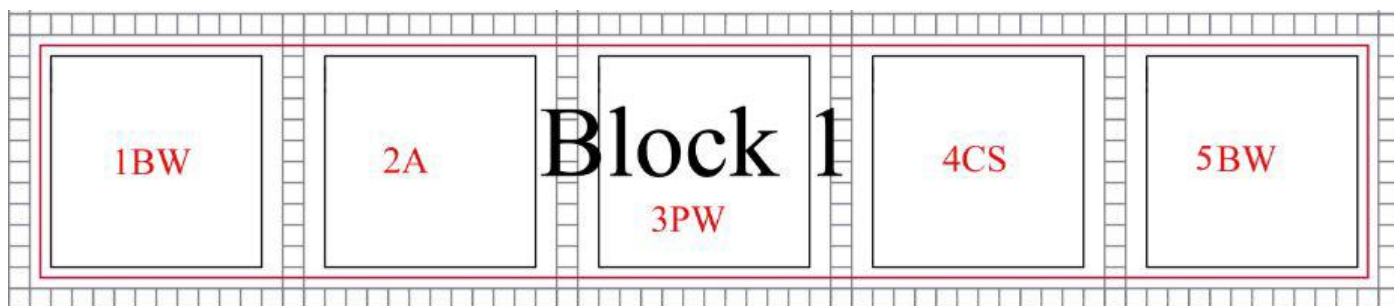
PANDORA'S BOX

Blackwork Journey - Designs by Elizabeth Almond

Block 1 Patterns 1 - 5



Block 1 Evenweave and Aida Work Sequence



Block 1 Instructions Evenweave Patterns 1- -5

Set within a border of Four-sided stitch

Locate Block 1 Patterns 1-5 on the Master Chart.

Note: The patterns follow diagonally across the chart so some blocks will have more than one block of the same technique. (See Master chart) The two charts are NOT identical. The fabric and pulled thread stitch variations have led to several patterns being placed in different parts of the chart. Please follow the chart you have selected for the fabric.

Grid Size: 32W x 136H
Design Area: 2.00" x 9.43" (28 x 132 stitches)

Legend:

■ [2] DMC-333 ANC-110

Call Outs:

■ [2] DLE-E3852 DMC Light Effects

Backstitch Lines:

— DMC-550 — DMC-666 — DMC-333 — DLE-E3852

Beads:

● MHG-557 Mill Hill Glass Beads

Stitches Used:

Back stitch, one strand

Cross stitch, two strands

Four-sided stitch, Cotton Pérle or two strands of floss

Wave stitch, Cotton Pérle No.12

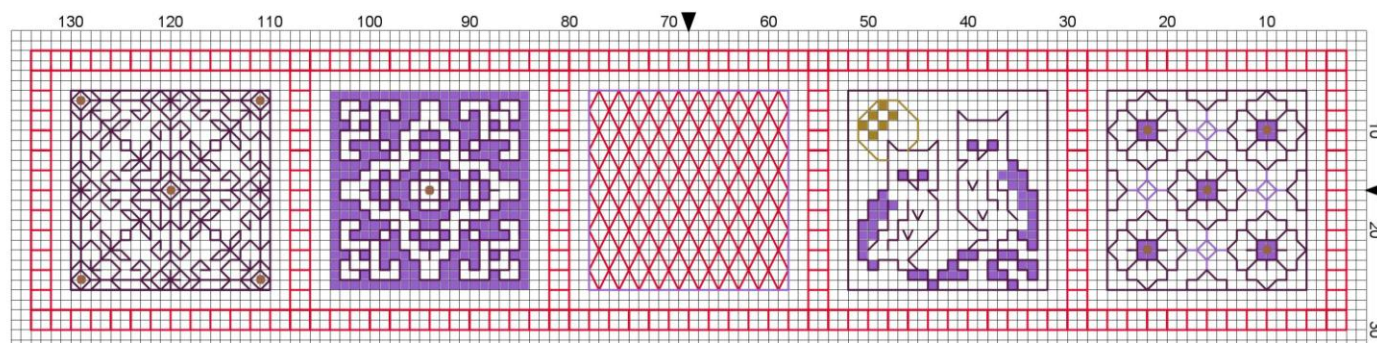
Anchor 1325 Iris - variegated, three skeins

Anchor 1325 - is represented by DMC-333 Lavender on the chart.

DMC Cotton Pérle No.12, white, one ball

DMC Cotton Pérle No.12 - is represented by DMC-666 Christmas red on the chart.

Do not add the beads until after the embroidery has been completed.



Block 1 Patterns 1 - 5

The four-sided stitch framework has been used to create squares and rectangles. The pattern blocks are inserted into this framework

Pattern 1 Blackwork

1. Starting from the centre of the motif, insert the blackwork pattern using one strand of DMC 550 Violet.

Pattern 2 Assisi

1. Starting from the centre of the motif work the cross stitch in two strands of Anchor 1325 Iris.
2. Work the back stitch round the cross stitch in one strand of DMC 550 Violet

Pattern 3 Pulled thread work

1. Wave Stitch Follow the instructions below...
2. Use DMC CottonPérle No.12 or two strands of floss.
3. Pull each stitch tight to create the holes. No threads are removed from the fabric.

Pattern 4 Cross Stitch and blackwork

1. Work the owls in cross stitch Anchor 1325 and back stitch DMC 550.
2. Work the moon in DMC Light Effects Gold using cross stitch and back stitch.
2. Use short lengths of metallic thread to reduce fraying.

Pattern 5 Blackwork

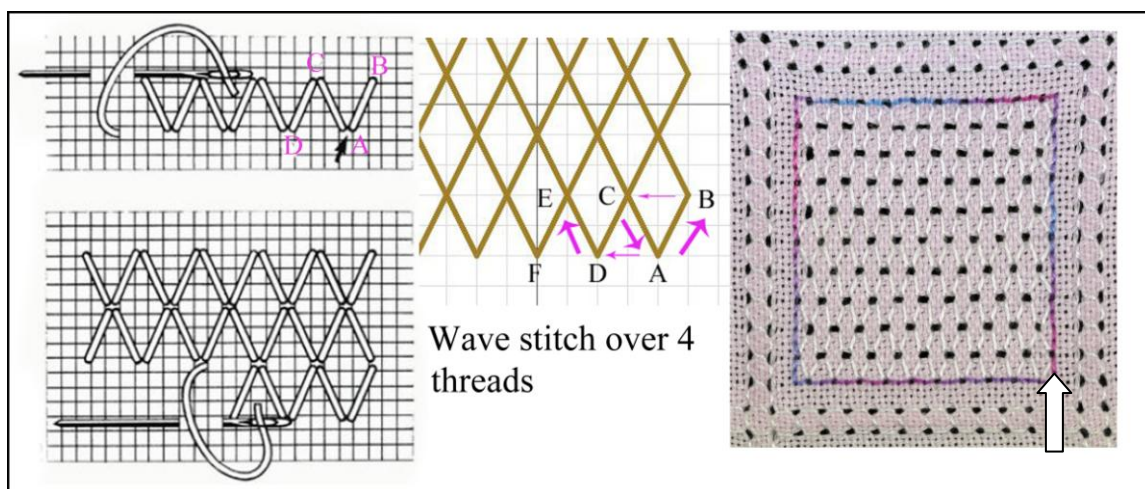
1. Work the cross stitch centres in two strands of Anchor 1325
2. The back stitch flowers are worked in one strand of DMC 550.

Add the beads after the five pattern blocks have been completed.

Wave stitch Instructions

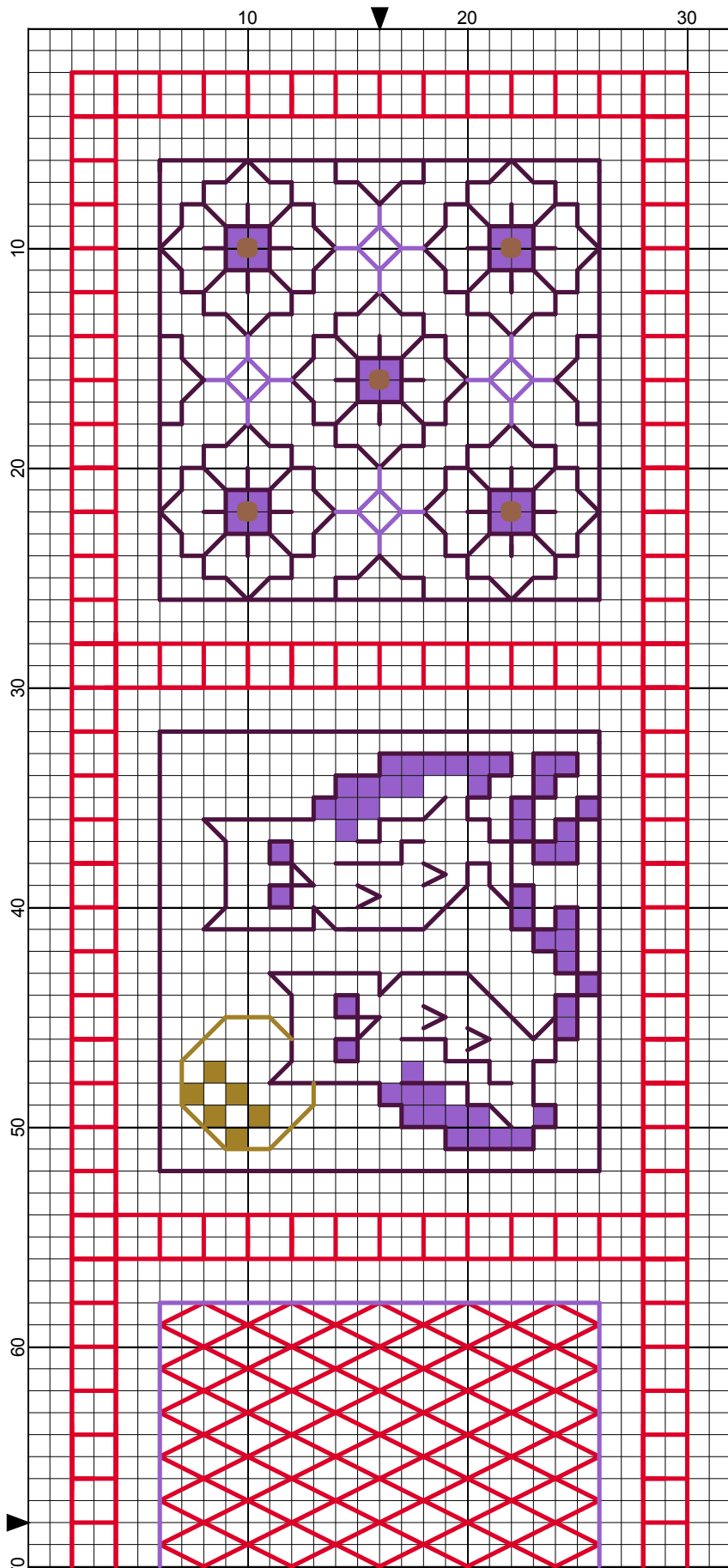
Method:

1. Insert the wave stitch pattern working from right to left 6 x 4 threads in from the border. Come up at A, move 2 threads to the right, up 4 – B - C, down 4 threads C - A, C - D, D - E, E - F. Repeat the full width of the pattern. Pull each **stitch** tightly to draw the fabric and create the hole.
2. Second row turn the work 180 degrees and repeat until the whole area has been completed.
3. Work a row of back stitch over two threads round the wave stitch in Anchor 1325.
4. Weave all ends into the back of the work carefully.



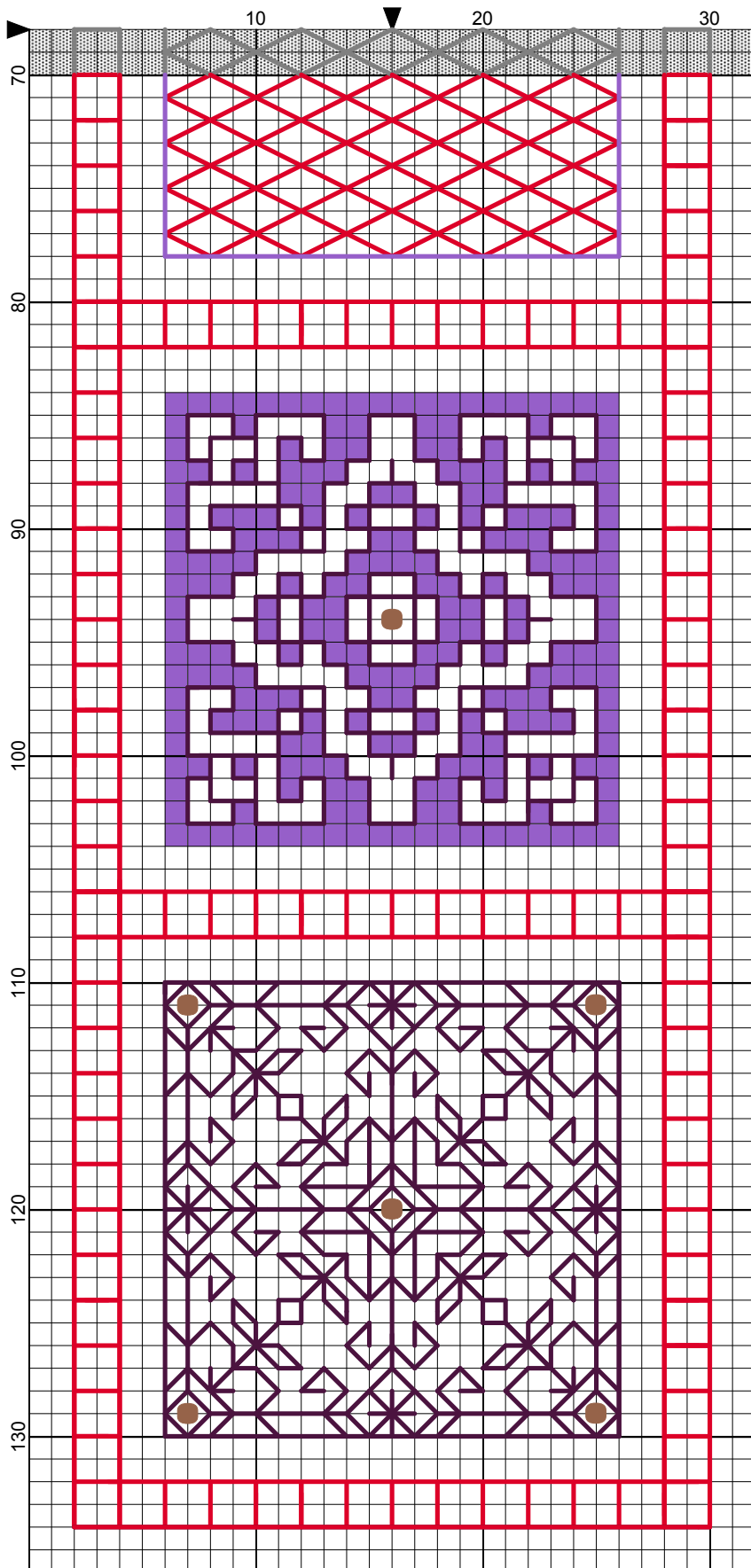
Start at the arrow 6 x 4 threads in from the border. Work the wave stitch in rows, turning the fabric at the end of each row.

Pandora's Box Evenweave Block 1



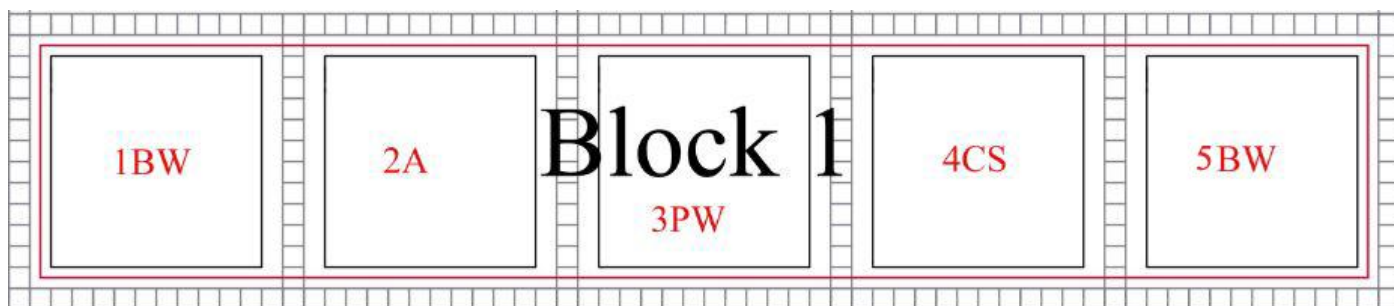
- Legend:
- DMC-333
 - DLE-E3852
- Backstitches:
- DMC-550
 - DMC-666
 - DMC-333
 - DLE-E3852
- Beads:
- MHG-557

Pandora's Box Evenweave Block 1



Elizabeth Almond

Block 1 Aida Work Sequence



Block 1 Instructions Aida Patterns 1- 5

Set within a border of Four-sided stitch worked in two strands of DMC318 Pale grey.

Locate Block 1 Patterns 1-5 on the Master Chart.

Note: The patterns follow diagonally across the chart so some blocks will have more than one block of the same technique. (See Master chart) The two charts are NOT identical. It is not possible to work pulled thread stitches on Aida so alternative patterns have been included. The fabric and stitch variations have led to several patterns being placed in different parts of the chart. Please follow the chart you have selected for the fabric.

Grid Size: 32W x 136H
Design Area: 2.00" x 9.43" (28 x 132 stitches)

Legend:

▲ [2] DMC-3843 ANC-1089

Backstitch Lines:

— DMC-310 — DMC-414 — DMC-3843

Beads:

○ MHA-3037 Mill Hill Antique Beads

Threads: 4 colours

DMC-310 Black, one skein

DMC 318 Pale grey, one skein The pale grey 318 is used for the pulled thread framework work only.

DMC 318 Pale Grey –is represented by DMC 414 steel grey on the chart

DMC 53 grey/black variegated, three skeins - represented on the chart by DMC-3843 electric blue

DMC Light Effects DLE-E3852 Dark Gold, one skein

Mill Hill Glass Beads 557 -Gold

Note: On the chart for clarity DMC 414 Steel Grey represents DMC 318 pale grey and DMC 3843 electric blue represents DMC53 variegated.

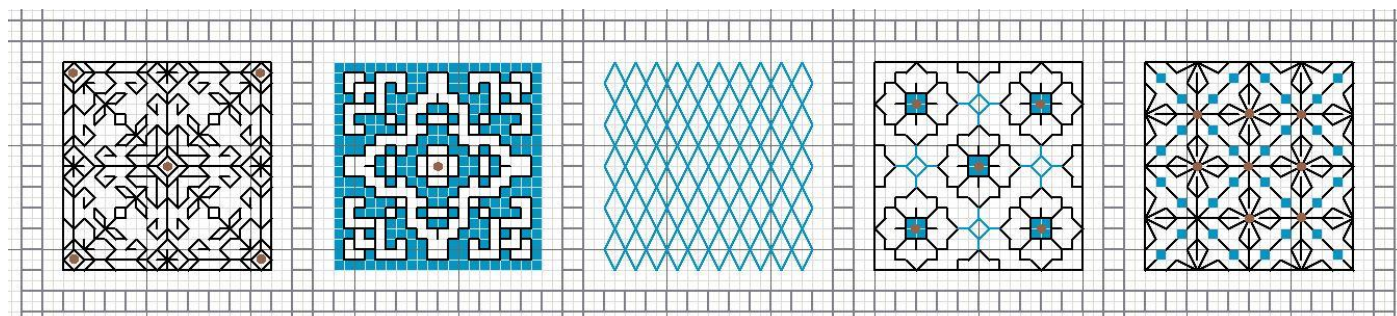
Stitches Used:

Back stitch, one strand

Cross stitch, two strands

Four-sided stitch, two strands of floss DMC 318 Pale grey

Wave stitch, DMC 53 variegated, two strands



Block 1 Aida Patterns 1 - 5

The four-sided stitch framework has been used to create squares and rectangles using two strands of DMC 318. The four-sided stitch is NOT pulled tight on Aida fabric but is treated as an embroidery stitch. The pattern blocks are inserted into this framework

Pattern 1 Blackwork

1. Starting from the centre of the motif, insert the blackwork pattern using one strand of DMC 310 black.

Pattern 2 Assisi

1. Starting from the centre of the motif work the cross stitch in two strands of DMC 53.
2. Work the back stitch round the cross stitch in one strand of DMC 310.

Pattern 3 Wave stitch

1. Wave Stitch Follow the instructions below but do NOT pull the threads tight
2. Use two strands of DMC 53 to create the diamond pattern.

Pattern 4 Cross Stitch and blackwork

1. Work the flower centres in cross stitch DMC 53 and back stitch DMC 310

Pattern 5 Blackwork

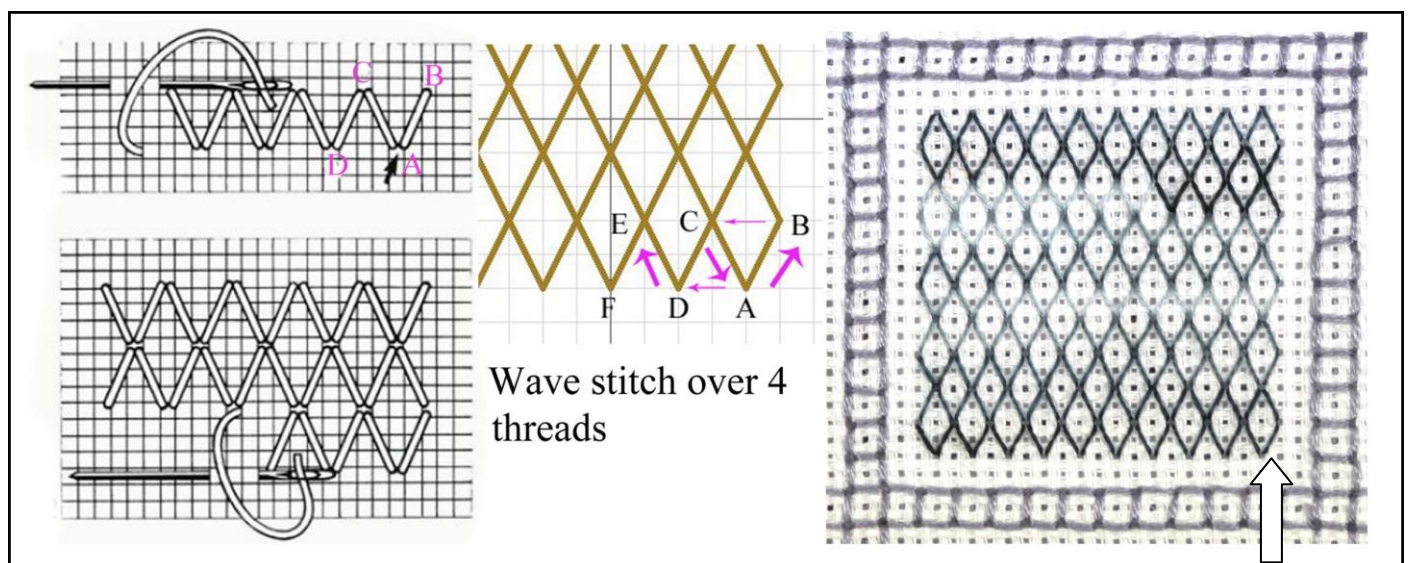
1. Work the cross stitch in two strands of DMC 53
2. The background is worked in one strand of DMC 310.

Add the beads after the five pattern blocks have been completed.

Wave stitch Instructions

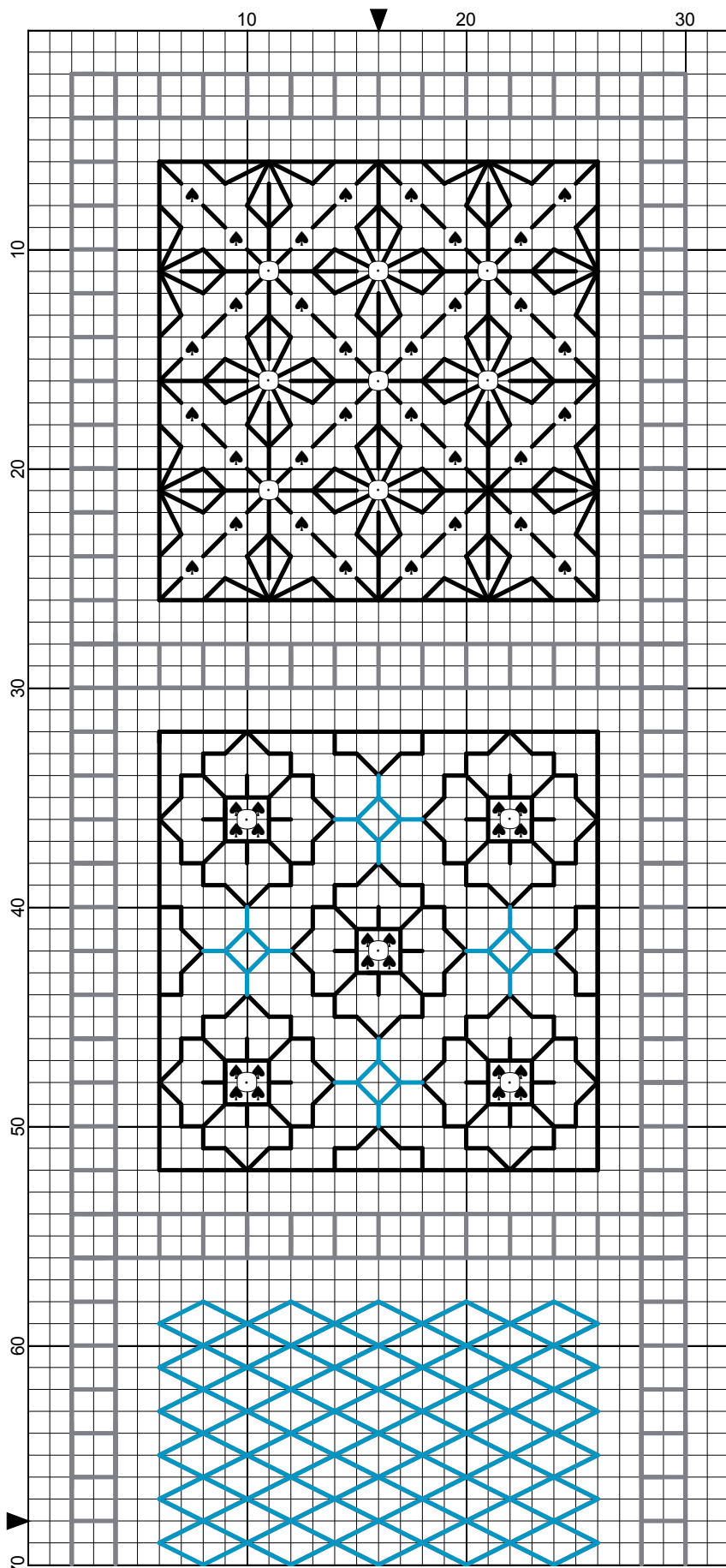
Method:

1. Using two strands of DMC 53 insert the wave stitch pattern working from right to left. Come up at A, move 2 threads to the right, up 4 – B - C, down 4 threads C - A, C - D, D - E, E - F. Repeat the full width of the pattern.
2. Second row turn the work 180 degrees and repeat until the whole area has been completed.
3. Weave all ends into the back of the work carefully.



Start at the arrow 3 blocks in from the border. Work the wave stitch in rows, turning the fabric at the end of each row.

Pandora's Box Block 1 Aida



- Legend:
-   DMC-3843
 - Backstitches:
 -  DMC-310
 -  DMC-414
 -  DMC-3843
 - Beads:
 -  MHA-3037

Pandora's Box Block 1 Aida

